

Inkjet Printer
UX Twin Series

HITACHI
Inspire the Next



TWIN Nozzle



Coding Solutions by Hitachi



Twin Nozzle & Double Speed For Superior Performance

The traceability requirements of packaging creates a need for more and more information, which has to be tagged - best before date, use-by date or date of filling. Codes for fish and meat which include freezing period and fishing zone pose a challenge for printers.

Hitachi's Continuous Ink Jet Printer with innovative Twin nozzle can print multiple lines of code to match traceability requirements without production line complexity or speed reduction. The Twin Jet contains a circulatory system to provide two nozzles at the same time. The result is outstanding, high-speed printing underlining Hitachi's commitment to quality.

Hitachi offers unique ink drop management ensuring all information is clearly printed.

Both nozzles can be operated independently. Print settings and various font sizes can be adjusted optionally.

Due to the high quantity of available dots per sign, there are many new possibilities to design logos and fonts.

The Twin Jet is ideal for customers with high standards in multiline printing at high-speed and complex codes with text, logo and barcode.

The high-speed UX twin series with its uptime benefits and clean operation is also ideal for the dairy industry where short shelf life and focus on hygiene creates additional pressure on packaging requirements.





Twin Specific Features



Flexible 8 Line Print

The UX twin print head now offers the ability to produce 8 lines of text by combining two individual nozzles into one, compact design. In addition, by utilizing Hitachi's first on the market "interlaced" print control technique, multiple line messages are printed clearly and legibly, further reducing coding errors due to misprint.



High-speed printing

Two nozzles at one print head realizes double-speed printing, which can track even on a high-speed production line, resulting in high-quality printing regardless of the number of print lines.



Versatile 64-Dot

Hitachi's innovative design now produces 64 vertical dots of print, resulting in large, bold characters. This makes the UX twin nozzle printer ideally suited to mark company logos, UL marks, or any other pattern previously unachievable with traditional print heads.



Character Stitch Capability

A unique option in the new twin-nozzle printer is the ability to stitch both nozzles together. This results in characters that are bigger and bolder than ever, compared to those printed by individual nozzles. This is particularly useful when character recognition is needed at a distance from the product.

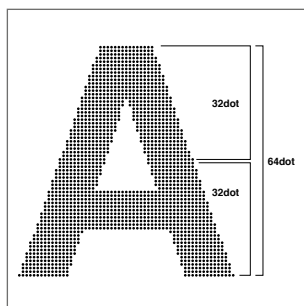
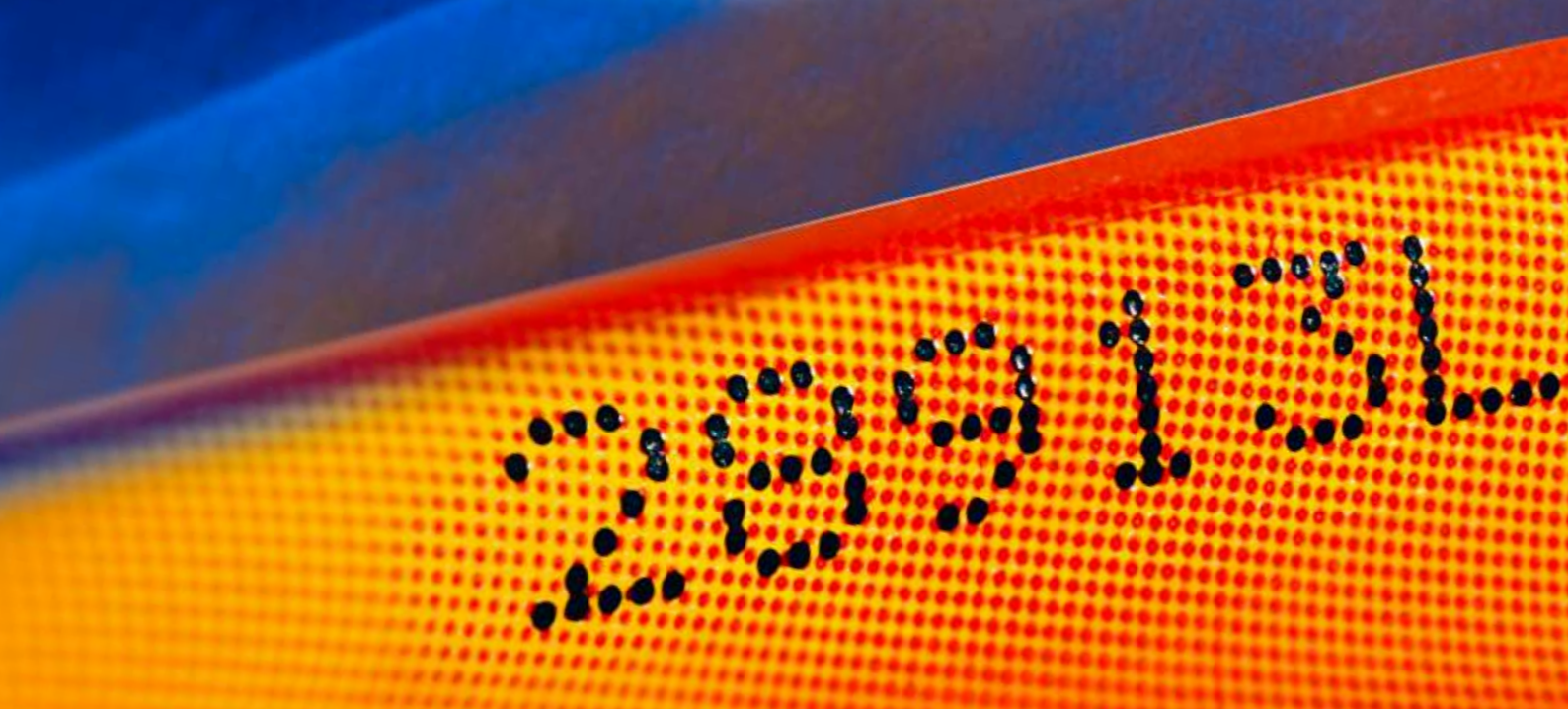


Image is for illustration purposes



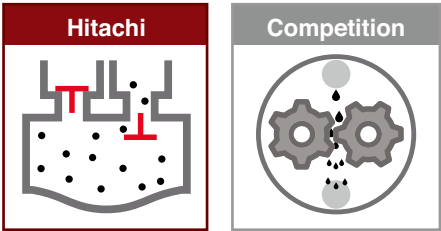
Printing on styrofoam



UX - The Heart Of Reliability

Increased Ink Integrity

Unlike a gear pump, a diaphragm pump does not shear the ink passing through it. Ink shearing results in lower viscosity and can adversely affect print quality. Hitachi diaphragm pumps provide a consistent supply of ink to the print head.



Designed & Built by Hitachi

The diaphragm pump is the heart of each Hitachi printer. For this reason, Hitachi doesn't use an off-the-shelf product. Each pump is designed and built by Hitachi to the highest standards.



Quad Chamber Design

Each pump is designed with four chambers allowing pump load to be distributed. Subsequently, the life span of each printer is significantly improved over single chamber pump designs.

4

Heavy on Quality

Hitachi diaphragm pumps are one of the heaviest components in each printer. This weight is due to the high-quality components used in the manufacturing of each pump. Quality is never compromised. You create superior products so you should have a partner who does too.



Individual Pump Replacement

By allowing each ultra-reliable pump to be replaced individually, the Total Cost of Ownership for a UX Series printer is minimized.





Easy to Use Interface

The display of our twin-nozzle model utilizes the same, easy-to-use touchscreen incorporated in other UX models. A large 10.4" display, and intuitive parameter illustrations reduce the complexity typically found in traditional small screen printers. In addition, messages can be easily changed in one screen, with a live WYSIWYG display.



Low Total Costs of Operation

Hitachi's design facilitates longevity. Each component of our print-head can be replaced individually, thus reducing the need to purchase costly sub-assemblies. In addition, our preventative maintenance items are all replaceable individually, further reducing the unnecessary replacement of complete ink circuits or complete ink cores.



Easy Drain Cartridges

Hitachi's ink cartridges can be easily changed without stopping production. In addition, the unique design facilitates the complete evacuation of fluids, allowing users to take advantage of fluids right to the last drop. Empty cartridges are sealed after removal, eliminating the potential release of hazardous solvents.



Designed for Harsh Environments

The stainless steel cabinet offers IP-55 allowing wash-down and dust protection. The UX Series Twin nozzle's protection is the ideal choice for a variety of printing needs.



Standard Print Samples

High-speed printing	2 LINE	Nozzle 2 01234567	2 LINE	Nozzle 2 01234567
		Nozzle 1 ABCDEFGH 160m/min Font: 5x7		Nozzle 1 ABCDEFGH 200m/min Font: 5x7
2, 3-line printing	2 LINE	Nozzle 2 01234567890	3 LINE	Nozzle 2 01234567890
		Nozzle 1 ABCDEFGH IJK Font: 7x10		Nozzle 1 TWINNOZZLE8 Font: 7x10
Multi-line printing (4line, 8line)	4 LINE	Nozzle 2 (2 line English) 05/08/18 ABCD 05/02/19 1234	8 LINE	Nozzle 2 (4 line) SELL BY AUG 8 MANUFACTURED BY HIES 11:37:17 BEST BY 05 FEB<FEB>2020 LOV 8929 0417 6557 HITACHI INDUSTRIAL EQUIPMENT MADE IN JAPAN TEL +81-4345-6077 IOS 9001
		Nozzle 1 (2 line Arabic) :0/:A/1A ABCD :0/:C/19 1C7E Font: 5x8		Nozzle 1 (4 line) Font: 5x7
Dot mixture		Nozzle 2 ABCD HIES UX 017H04 BEST BY 528N02		Nozzle 2
		Nozzle 1 05FEB<FEB>2019 Font: 5x8 12x16		Nozzle 1
		Nozzle 2 UX TWIN TOKYO EXPO PACKAGING TECHNICAL AREA CODING 860		Nozzle 2
		Nozzle 1 HITACHI INDUSTRIAL EQUIPMENT SYSTEMS Font: 5x7, 12x16		Nozzle 1
Logos*		Nozzle 2 [CE] 40 dots		Nozzle 2 [JIS] 48 dots
		Nozzle 1 [A] 64 dots		Nozzle 1 [Wave] 64 dots
Bold characters		Nozzle 2 5x7 BOLD 2 LINE S 5x7 BOLD 2 LINE B		Nozzle 2
		Nozzle 1 5x7 BOLD 2 LINE S 5x7 BOLD 2 LINE B Font: 5x7		Nozzle 1
Chimney characters		Nozzle 2 7x5 0123456789		Nozzle 2 7x5 0123456789
		Nozzle 1 7x5 0123456789 Font: 5x7		Nozzle 1 7x5 0123456789 Font: 5x7
Inverted characters (DIN printing)		Nozzle 2 12x16 DIN PRINT		Nozzle 2
		Nozzle 1 12x16 DIN PRINT Font: 12x16, 7x5		Nozzle 1
Barcodes		Nozzle 2 [Barcode]		Nozzle 2 [Barcode]
		Nozzle 1 0123456 Font: 18x24, 5x7		Nozzle 1 6 11942 03936 4 4400 4" X 10" Font: 24x32, 5x7
QR Codes		Nozzle 2 [QR]		Nozzle 2 [QR]
		Nozzle 1 Our Web Here Font: 29x29, 5x7		Nozzle 1 Sanki Web Font: 25x25, 5x7
Datamatrix		Nozzle 2 [DM]		Nozzle 2 [DM]
		Nozzle 1 HITACHI Font: 16x16, 5x7		Nozzle 1 Our Web Here Font: 16x36, 5x7
				Nozzle 1 [DM] 64 dots**

* When printing logos, please make sure the image is acceptable to the association or the organization.

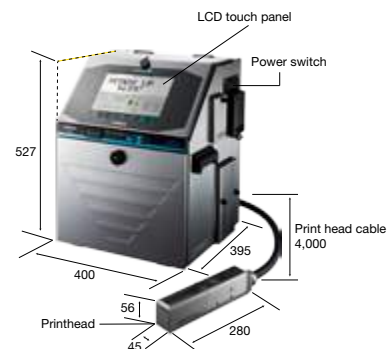
** This printing will be made with use of graphics data (dot-pattern) but not with 2D code function. This graphics data (dot-pattern) should be prepared by the users. Read rate will vary depending on the print condition.

Standard Specifications

Item		UX-D860W
Nozzle Size		65µm
Maximum number of print lines		Up to 8 lines
Maximum number of print characters		Up to 1,000 characters
Font (Horizontal x Vertical)	4 x 5	✓
	5 x 5	✓
	5 x 7(8) 9 x 7(8)	✓
	7 x 10	✓
	11 x 11	✓ (Chinese only)
	10 x 12	✓
	12 x 16	✓
	18 x 24	✓
	24 x 32	✓
	30 x 40	✓*
	36 x 48	✓*
	48 x 64	✓*
Character height		2 - 21 mm
Display & input device		WYSIWYG design Display: TFT LCD (10.4" color), backlight provided Input device: Touch panel, input sound provided
Screen language (2 languages selectable)		English, Chinese, Korean, Thai, Vietnamese, German, French, Dutch, Italian, Spanish, Portuguese, Swedish, Danish, Greek, Russian, Czech, Polish, Arabic, Serbian, Turkish, Hungarian, Bulgarian, Catalan, Romanian, Finnish, Norwegian, Slovenian
Maximum print rate (Character per second) (Font 5x5, space 1, 1 line)		Up to 2,296 (Option: Up to 2,563) per nozzle**
Standard characters		Alphanumeric (A-Z, a-z, 0-9), symbols (27) and space: Total 90
User patterns		200 patterns each for dot matrix (50 patterns for 30x40, 36x48, 48x64 fonts)
Print functions		Calendar, Count, Font mixture, Shift Code
Barcode printing		code39, ITF, NW-7, EAN-13, EAN-8, UPC-A, UPC-E, code128/EAN-128, GS-1 DataBar
2D code printing		Data Matrix (Alphabet: 49 characters/Numerals: 98 characters), QR Code, Micro QR code
Message storage capacity		Up to 2,000 messages (Depends on data content)
Input signal		Print target detection, Printing stop, Rotary encoder pulse, Reciprocative printing, Remote control (Run, Stop, High-voltage ON / OFF, Reset), (NPN / PNP Selectable)
Output signal		Print in progress or Print complete, Online (NPN / PNP Selectable), Print ready, Fault, Warning (NPN Only)
Data interface		RS-232C at baud rates selectable up to 115,200bps
Ethernet (Modbus communication)		IEEE802.3, 100BASE-T
External memory		USB for user data storage
Print head cable length / angle		4m (in-line/90 degrees)
Operating temperature range		0-40° (1072K Ink)
Operating humidity range		30-90% RH (no condensation)
Power supply (Automatic voltage selection)		AC100-120/220-240V±10% 50/60Hz 150VA
Approval		CE, UL, cUL, RCM, FCC, ICES
Dimensions (Width x Depth x Height)		400 x 395 x 527 mm
International protection		IP55
Approximate weight		34kg

* The character is printed with the composite character made by the user patterns for both nozzles 1 and 2.

** Ink types and temperature are limited.



Note: Main unit dimensions do not include any projections.

HITACHI

Inspire the Next

Please follow us:



More information about
Hitachi Coding & Marking products:
www.hitachi-industrial.eu

Hitachi Europe GmbH, Am Seestern 18, D-40547 Düsseldorf
Phone: +49(0)211-5283-0, Fax: +49(0)211-5283-649
www.hitachi-industrial.eu, info@hitachi-ds.com
Hitachi Industrial Equipment Systems Co., Ltd., Japan

All company and product names in this brochure are
the property of the respective companies.