

Engineering Solutions and Software Integration



Control
Supervision
Customised solutions

 **ckham 3.0**

Marking Identification Coding

Ockham 3.0 : Open Global Traceability Solution

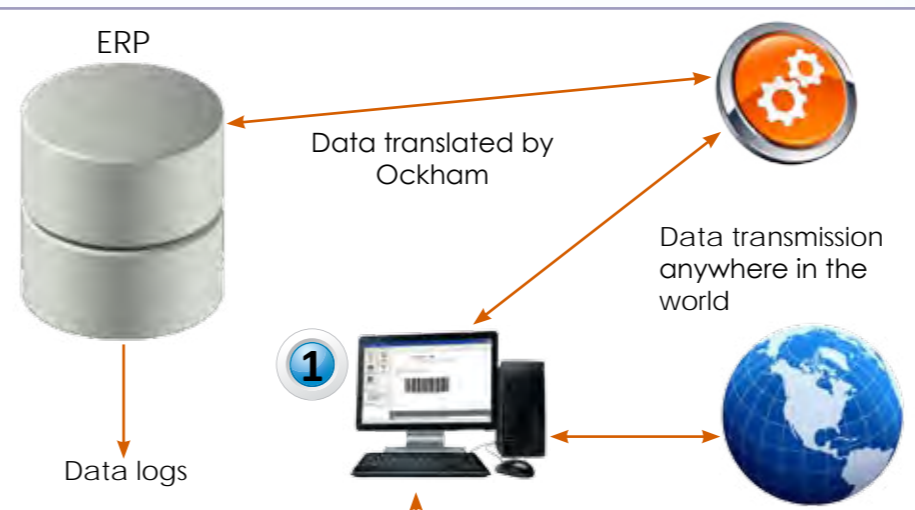
Our Ockham system designed with intelligent bricks allows you to use a host of customised software depending on your needs.

▶ 3 levels of production controls

▶ Modules for Ockham 3.0

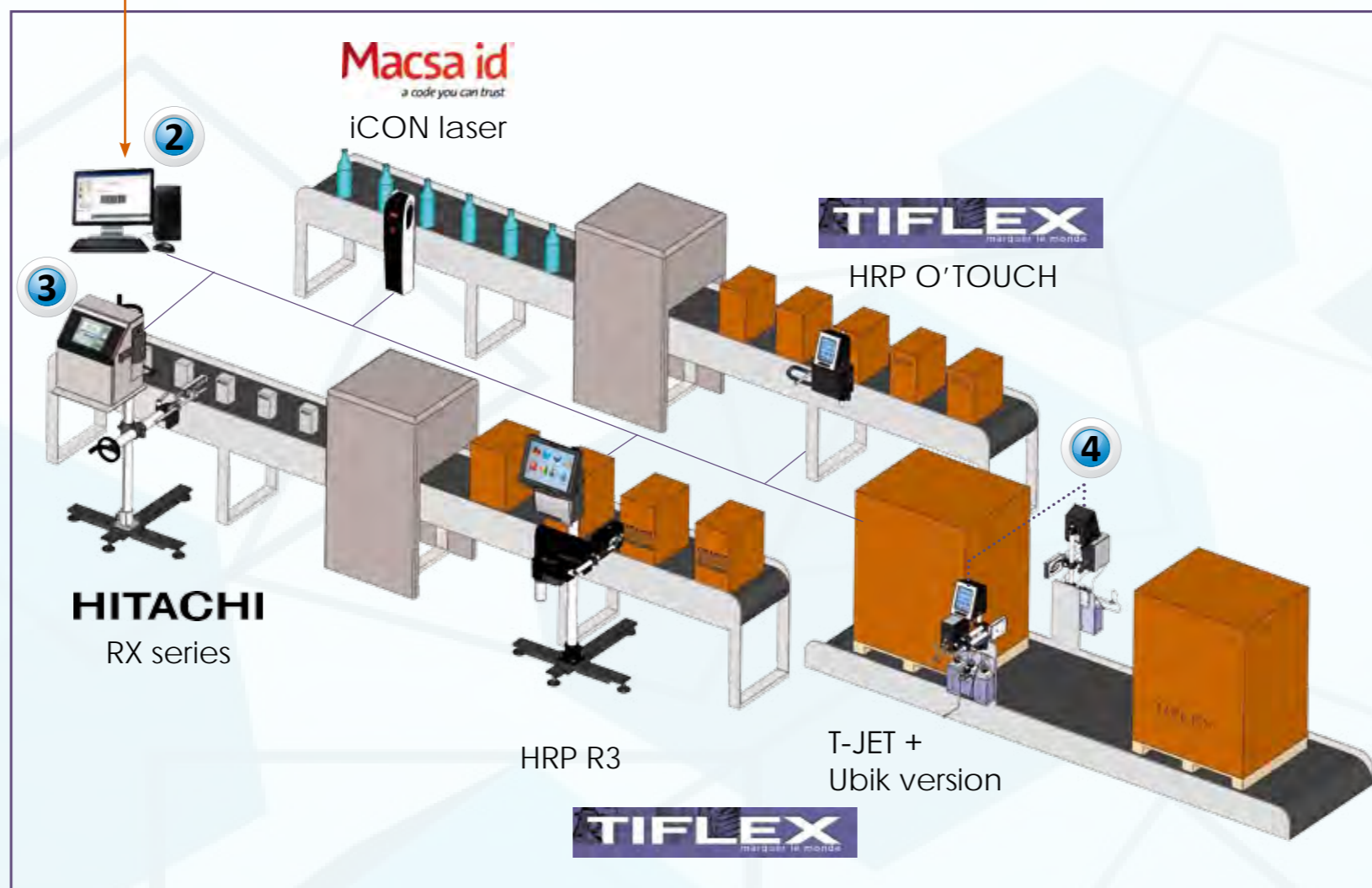
Central Supervision ①

Ockham will serve as the link between your ERP, your server and the printers on your production plants. Manufacturing order launched by your ERP, will be automatically translated and transferred to the printers concerned. Moreover Ockham will create a log of all the exchanges between your printers and the server.



On-site Supervision ②

With our software solutions, we can also install an on-site control station to manage your printers. The same tasks can be undertaken from this workstation (messaging, launching manufacturing orders, logs...) as in the case of the central supervising station.



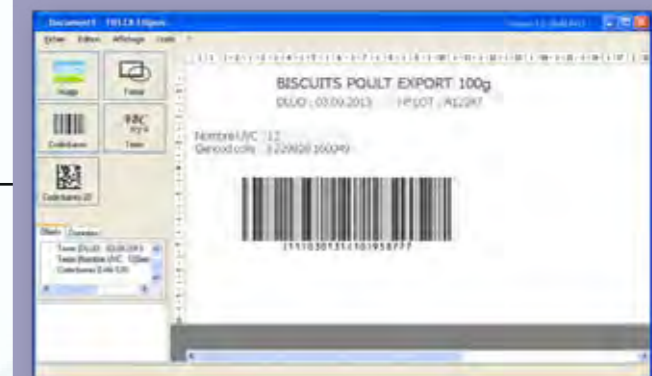
On the production line* ③

An operator can also manually launch the manufacturing order from a printer or a handheld scanner. There will be no need to put production on hold in the case of problems on the network.

*Printer access can be password protected

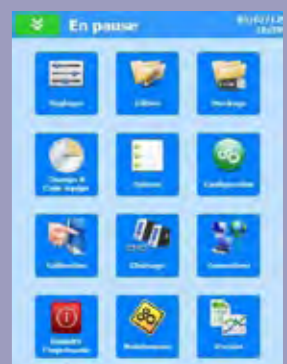
e Ellipsis:

Create your messages on a PC and send them to the printer of your choice. All your marking will be controlled by an intuitive interface.



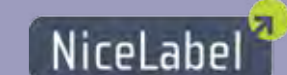
u Ubik:

Using a HRP printer, this software helps you to control a Tiflex, Hitachi or Macsa laser printer. A master/slave link can also be established between two Tiflex printers (Tjet+ or HRP).



R Tailor-made solutions:

We are capable of offering printers which are totally integrated into your production lines, and which meet your requirements perfectly. We can also develop customised software applications for your networks. For example, we have created specific software for the world leaders in labelling software CODESOFT® and NICELABEL®.



Clients applications

Client #1

Printers control

Client #1 along with their 890 collaborators, is one of the leading specialists in the production and commercialisation of baked goods. They are capable of undertaking projects which are tailor-made to suit their partners' needs, thanks to their know-how and adaptability in terms of Research and Development and industrial processes.

For this client we have designed a simple method which not only controls all their printers, but can also be integrated into their ERP system without any major modifications.

Our Ockham solution, associated with the Arecibo library, meets our client's expectations perfectly. All the client needs to do is put a text file on his server to send the instructions to the printers. Ockham takes care of the rest and can send information to any of the printers in the network.

Client #2

Controls and traceability supervision

Client #2 is a French agro-food company, specialised in fruit processing and dairy products. They own several well-known brands in the agro-food sector.

This client, already one of Tiflex's partners, had been looking for a solution to control and supervise their printers on their production lines. The aim was to have total control over the marking devices on site. For example, send out a production order but also receive feedback concerning the printer status, ink levels, or even confirmation of the printing quality of the barcodes through an associated re-reading system.

Client #3

Customised solutions for better user ergonomics

Client #3 designs, organises and controls all the operations (including Customs formalities) necessary for international shipping.

On products shipped to the North African countries, this client is therefore obliged to print their text in Arabic. This text is easily printed on a Hitachi printer. To meet this client's needs, Tiflex has developed a software which converts Unicode fonts from Word, to Hitachi code. The client can therefore copy / paste the Arabic text from a Word document towards the printer rapidly.

The client has gained in efficiency in its shipping operations to the Arab world.



Customer #1 Control and Traceability logs

Client needs and expectations:

- Different types of printers around the world
- IT system already in use and non-modifiable
- File transfer management through ERP
- Need for logs of exchanges
- One centralized solution for whole group



ERP

Easy to use XML file



XML

Communication between all printers
of the Tiflex range



Logs of all
exchanges
and events

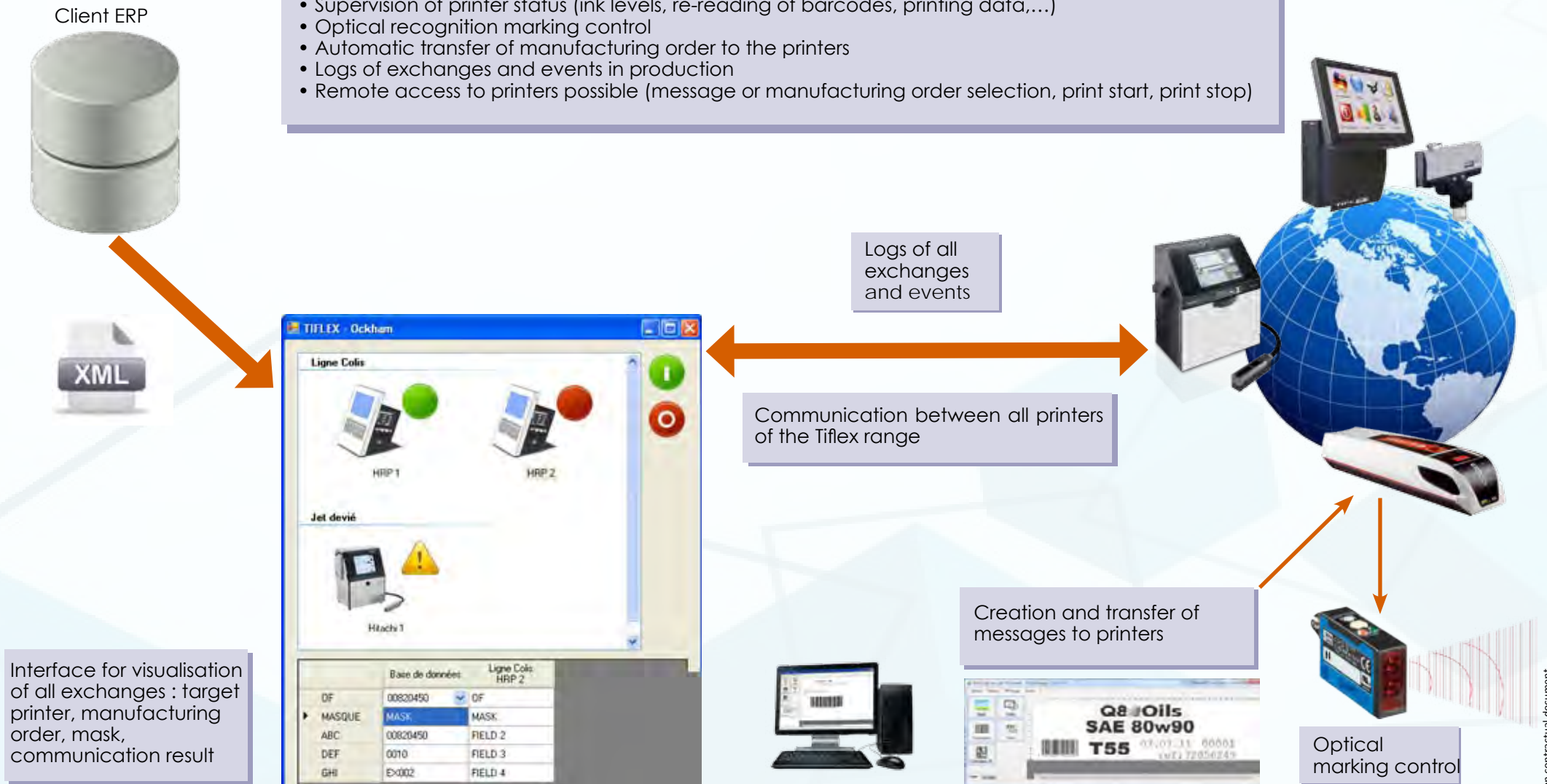


Interface for visualisation of all exchanges : target printer,
manufacturing order, mask, communication result

Customer #2 Control and Traceability supervision

Client needs and expectations:

- Supervision of printer status (ink levels, re-reading of barcodes, printing data,...)
- Optical recognition marking control
- Automatic transfer of manufacturing order to the printers
- Logs of exchanges and events in production
- Remote access to printers possible (message or manufacturing order selection, print start, print stop)





Customer #3

Customised solutions for better user ergonomics

Client needs and expectations:

- Printing text in Arabic
- Ergonomical and simple to use
- Transfer of text to printer from different Office software (Word, Excel, Email inbox...)

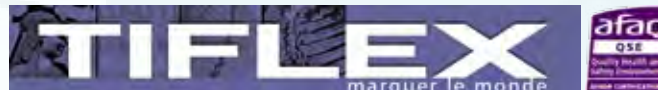


Copy / Paste text to be printed



Interface allows visualisation and modification of position of the text for marking (number of lines, font size, page layout...)

Communication with Hitachi printers of the Tiflex range



Total management, supervision, maintenance and interactivity

Client needs and expectations:

- Supervision of different printers
- Direct access to database « Marking » necessitating no modification / development of the IT system of client (total transparency of use)
- Optical controls for marking
- Use of CODESOFT software (already in use) for creation and transfer of messages
- Remote access for software maintenance (updates, etc)
- Traceability and logs
- Managing competitors printers
- Interaction with other logic controllers on the production line via MODBUS protocol
- Data exchange between Ockham and pre-existing software with ActiveX technology

